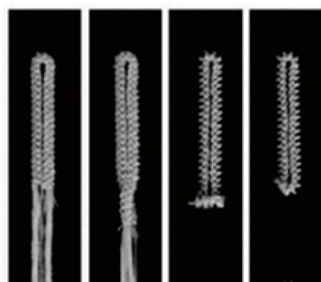
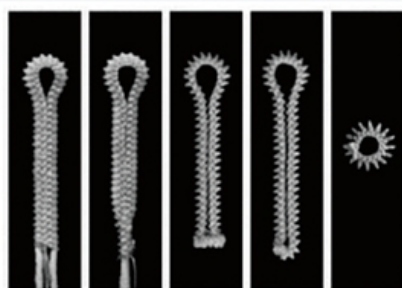




# SF 9820

## 高速电脑圆头锁眼机

HIGH-SPEED COMPUTERIZED EYELET BUTTONHOLER SEWING MACHINE



线迹图例 Stitch Sample

通过先进的电子技术进行最佳控制。生产效率和缝纫质量得到了高水平的结合，本机适用于西服、外衣、工作服、裤子等薄、中厚料的各种样式的锁眼。

提高了图案的精确性，采用了伺服控制的送布装置提高了刚性，因此可缝制出高精度图案，即便高速缝纫或缝制重物时，也不会产生电子缝纫机常有的失调偏位。伺服控制还免去了初始位置的检测。

Best control with advanced electronic technology. Production efficiency and sewing quality are combined in a perfect way. The machine is applicable to the hole locking of various button holes of formal suits, overcoat, work suits and trousers of different thickness.

Increase the picture precision, The servo-control cloth-sending device increases the rigidity, so it can sew high-precision pictures. It won't the maladjustment or deviation always happening to electronic sewing machine even if sewing at high speed or sewing heavy objects. The servo-control also spare the detection of preliminary position.



SF 9820



DOX558 Nm80-120  
(SHCMETZ558)



16mm  
(-00,-01:12mm)



2500



43.2L/min  
(8 cycle/min)